

# KOMATSU

## PC228USLC-11

EU Stage IV Engine

HYDRAULIC EXCAVATOR

PRELIMINARY



PC228

**ENGINE POWER**

123 kW / 165 HP @ 2.000 rpm

**OPERATING WEIGHT**

23.600 - 24.150 kg

**BUCKET CAPACITY**

max. 1,49 m<sup>3</sup>



## EXCEPTIONAL WORKABILITY AND ENVIRONMENTAL PERFORMANCE

### *Powerful and Environmentally Friendly*

- NEW** • EU Stage IV engine
- NEW** • Adjustable idle shutdown
- Komatsu fuel-saving technology
- NEW** • Engine fan clutch
- NEW** • Up to 21% higher lifting capacity

### *Total versatility*

- Ideal for a wide range of applications
- Short tail swing and exceptional stability
- 6 working modes
- Wide choice of options

**First-Class Comfort**

- Fully air-suspended operator station
- NEW** • Low noise design: class-leading 67 dB(A)
- NEW** • Widescreen monitor with evolutionary interface
- Low vibration levels
- Improved operator convenience

**Safety First**

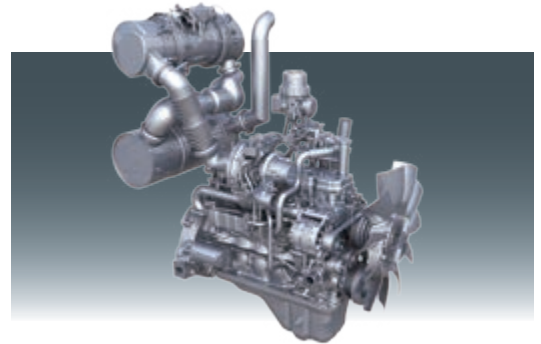
- Komatsu SpaceCab™ (FOPS optional)
- NEW** • Improved monitoring system
- NEW** • Neutral position detection system
- Safe access, easy maintenance
- Falling Object Protection System (FOPS) optional
- NEW** • KomVision surround view system as standard

**Quality You Can Rely On**

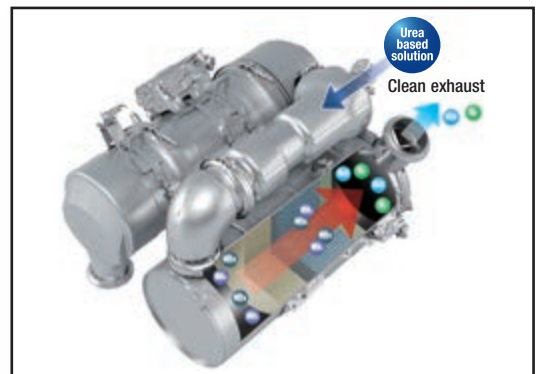
- Komatsu-quality components
- Extensive dealer support network
- Reliable and efficient
- Rugged design

**KOMTRAX**

- Komatsu Wireless Monitoring System
- NEW** • 3G mobile communications
- Integrated communication antenna
- NEW** • Increased operational data and fuel savings



*New, low consumption Komatsu SAA6D107E-3 engine.*




*New heavy-duty aftertreatment system combines the Komatsu Diesel Particulate Filter (KDPF) and Selective Catalytic Reduction (SCR) to fully comply with EU Stage IV emissions.*



*Fully air-suspended operator station ensures maximum operator comfort.*



*Improved monitoring system with KomVision surround view system as standard. Eco gauge, eco guidance and fuel consumption gauge help to further reduce consumption.*



A maintenance program for Komatsu customers

## ENGINE

Model	Komatsu SAA6D107E-3
Type	Common rail direct injection, water-cooled, emissionised, turbocharged, after-cooled diesel
Engine power	
at rated engine speed	2.000 rpm
ISO 14396	123 kW/165 HP
ISO 9249 (net engine power)	123 kW/165 HP
No. of cylinders	6
Bore x stroke	107 x 124 mm
Displacement	6,69 l

## HYDRAULIC SYSTEM

Type	HydrauMind. Closed-centre system with load sensing and pressure compensation valves
Additional circuits	2 additional circuits with proportional control can be installed
Main pump	2 variable displacement piston pumps supplying boom, arm, bucket, swing and travel circuits
Maximum pump flow	475 l/min
Relief valve settings	
Implement	380 kg/cm <sup>2</sup>
Travel	380 kg/cm <sup>2</sup>
Swing	295 kg/cm <sup>2</sup>
Pilot circuit	33 kg/cm <sup>2</sup>

## UNDERCARRIAGE

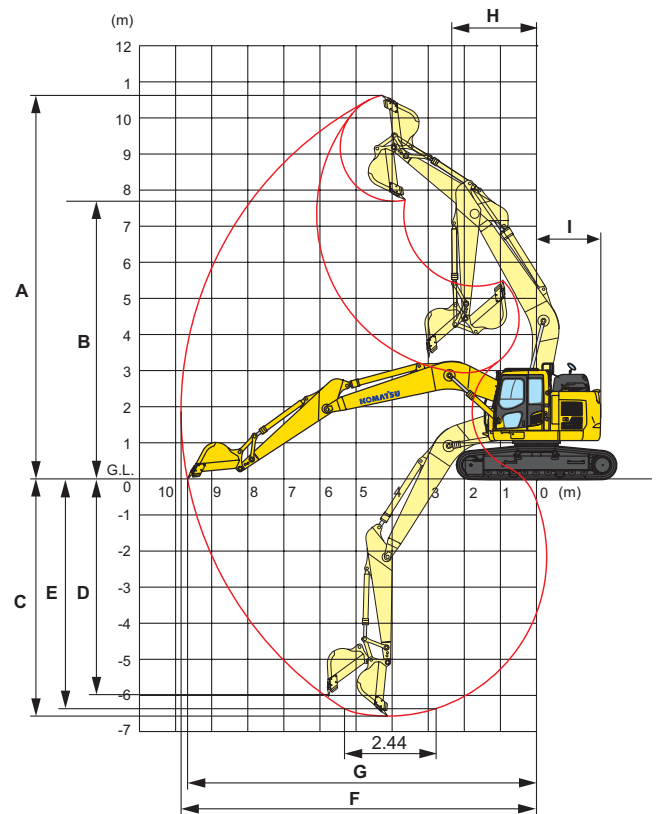
Construction	X-frame centre section with box section track frames
Track assembly	
Type	Fully sealed
Shoes (each side)	49
Tension	Combined spring and hydraulic unit
Rollers	
Track rollers (each side)	9
Carrier rollers (each side)	2

## ENVIRONMENT

Engine emissions	Fully complies with EU Stage IV exhaust emission regulations
Noise levels	
LwA external	100 dB(A) (2000/14/EC Stage II)
LpA operator ear	71 dB(A) (ISO 6396 dynamic test)
Vibration levels (EN 12096:1997)	
Hand/arm	≤ 2,5 m/s <sup>2</sup> (uncertainty K = 0,49 m/s <sup>2</sup> )
Body	≤ 0,5 m/s <sup>2</sup> (uncertainty K = 0,25 m/s <sup>2</sup> )
Contains fluorinated greenhouse gas HFC-134a (GWP 1430). Quantity of gas 0,9 kg, CO <sub>2</sub> equivalent 1,14 t	

\* Load is limited by hydraulic capacity rather than tipping. Ratings are based on SAE Standard No. J1097. Rated loads do not exceed 87% of hydraulic lift capacity or 75% of tipping load. When lifting with additional equipment installed to the arm, please subtract the weight of all additional equipment from the values stated.

## WORKING RANGE



	ARM LENGTH	2,9 m
A	Max. digging height	10.700 mm
B	Max. dumping height	7.825 mm
C	Max. digging depth	6.620 mm
D	Max. vertical wall digging depth	5.980 mm
E	Max. digging depth of cut for 2,44 m level	6.370 mm
F	Max. digging reach	9.875 mm
G	Max. digging reach at ground level	9.700 mm
H	Min. swing radius	2.310 mm
I	Max. tail swing radius	1.785 mm

## LIFTING CAPACITIES (with 2,9 m arm, 700 mm shoes)

REACH	MAX	7,5 m		6,0 m	
		FRONT	SIDE	FRONT	SIDE
6,0 m	kg	*3.735	*3.735	*4.085	4.150
4,5 m	kg	*3.785	3.735	6.000	4.185
3,0 m	kg	*3.935	3.450	6.050	4.085
1,5 m	kg	*4.235	3.335	6.100	3.935
0,0 m	kg	4.800	3.385	5.950	3.835
-1,5 m	kg	5.600	3.600	5.900	3.750
-3,0 m	kg	6.450	4.085		
-4,5 m	kg	8.050	5.400		

REACH	MAX	4,5 m		3,0 m		1,5 m	
		FRONT	SIDE	FRONT	SIDE	FRONT	SIDE
6,0 m	kg						
4,5 m	kg						
3,0 m	kg	*10.485	8.150	*15.000	14.350		
1,5 m	kg	12.050	7.450	*7.835	*7.835		
0,0 m	kg	11.935	7.250	*6.185	*6.185		
-1,5 m	kg	12.135	7.100	*10.285	*10.285	*6.135	*6.135
-3,0 m	kg	12.785	7.150	*17.335	13.485	*10.685	*10.685
-4,5 m	kg	*11.735	7.350	*17.350	13.685		